



December 29, 2016

Correction for Sew Quick Quilt Pattern, page 7 of 3-Yard Quilt Favorites Book

Please note the measurements for The Twin Size enlargement is incorrect. The correct finished size of the quilt is 59" x 79". You will find the corrected portion of the pattern below.

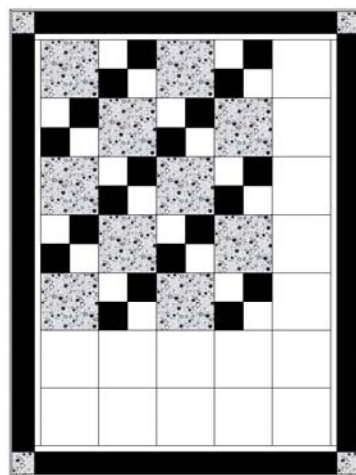
Should you need future clarification, please call toll-free, 1-866-855-0998. Please accept my apologies for any inconvenience this may have caused you.

Donna

Enlargement Diagram

Before cutting fabric, See Pages 2 & 3 for Basic Instructions

Twin Topper



Twin Topper

Finished Size: 59" x 79"
Cut 6 Border #1 Strips 1½" x WOF
Cut 7 Border #2 Strips 4" x WOF
Cut 4 Corner blocks 4" x 4"
Cut 7 Binding Strips 1¼" x WOF
Make 35 Blocks
Assemble 7 rows of 5 blocks each

Queen/King Topper

Finished Size: 106" x 96"
Cut 9 Border #1 Strips 3" x WOF
Cut 9 Border #2 Strips 6" x WOF
Cut 4 Corner blocks 6" x 6"
Cut 10 Binding Strips 1¼" x WOF
Make 72 Blocks
Assemble 8 rows of 9 blocks each

Queen/King Topper

